



GUANGDONG PIGEON MEDICAL APPARATUS CO.,LTD

Email: sales@gdgezi.com
support@pigeon-medical.com
Tel: 86-663-2298001
Fax: 86-663-2286006
Website: <http://www.gdgezi.com>

Headquarter Factory
Puning City
No.118,6/Zhuyuan,ChiweiTown,Puning City,Guangdong ,China

Branch Factory
Dongguan City
No.180,Donghuan Road,Xincheng Industrial Zone,Hengli Town,Dongguan City,Guangdong ,China
Shenzhen Office
24F,Building A,Zhongzhi Time Square,Donghuan Second Road,Longhua New District,Shenzhen City,Guangdong,China



OPTIMAL RESPIRATORY SOLUTION

NCPAP,Air Oxygen Blender,Medical Air Compressor,Infant Resuscitator,Humidifier,
Neonate Transport,Suction,Oxygen Analyzer,
Oxygen Inhaler,Circuit Support Arm,Trolley,Parts,etc.

Factory Profile

Guangdong Pigeon Medical Apparatus Co.,Ltd. is a high-tech enterprise specializing in independent research & development, production & sale of infant and maternal care products and assistive products since 1990s. Main products are Infant NCPAP, Air-oxygen Blender, Medical Air Compressor, Medical Heating Respiratory Humidifier, Infant Resuscitator, Oxygen Inhaler and Oxygen Analyzer, Neonate bed, etc.

Pigeon Medical dominates the Chinese and overseas market with high-quality products, professional skills, superior direct sales and after sales force, following four main principles: Advanced Technology, Excellent Quality, Users Supremacy and Customer Satisfaction.

CE 2460



CONTENT

INTRODUCTION	Business History -----	03
MAIN PRODUCT	NCPAP-----	05
	Air Oxygen Blender -----	11
	Medical Air Compressor -----	15
	Infant Resuscitator -----	17
	Humidifier -----	19
	Neonate Transport -----	22
	Suction -----	24
	Oxygen Analyzer -----	25
	Adult HFNC -----	27
	Infant HFNC -----	28
	Oxygen Inhaler -----	29
	Circuit Support Arm -----	30
	Trolley -----	31
Parts -----	33	



Business History



Established as a state owned enterprise in Puning, Guangdong.

Certified ISO.

Start to entry internation market.

Having distributors in over 20 countries, serving over 8000 hospitals.

Establish Shenzhen office.

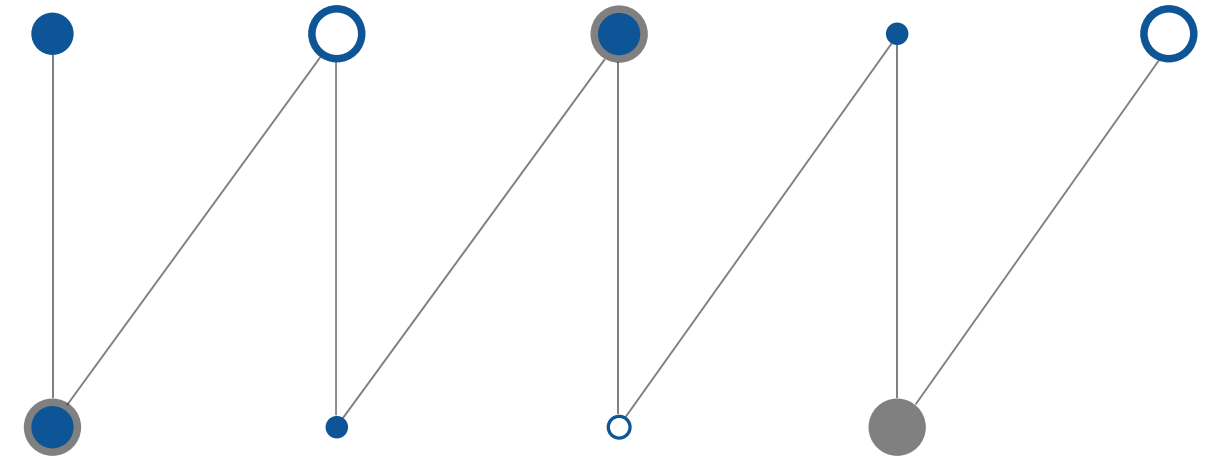
1990

2002

2010

2016

2020



2001

2008

2012

2018

Reformed to Pigeon Medical.

Be awarded as "Key Enterprise".

Branch was founded in Dongguan, Guangdong.

Enlarge and redecorate the factory to 10300m², having more than 150 employees.

NCPAP

Nasal Continuous Positive Airway Pressure (NCPAP) is a form of positive airway pressure ventilation with nasal prongs to keep the airways continuously open in people who are able to breathe spontaneously. Pigeon AD series commit to respiratory care for premature, neonate, pediatric with nasal prongs and are widely applied in ICU, NICU, PICU, etc.



Model:AD-I



Model:AD-IA



Model:AD-II

Model	AD-I	AD-IA	AD-II
FiO ₂	21%-100% (± 3%)	21%-100% (± 3%)	21%-100% (± 3%)
CPAP	3-10cmH ₂ O	3-10cmH ₂ O	0-10cmH ₂ O
Flow	2-18LPM	1-10LPM	2-18LPM
Noise	≤55 dB(A)	≤55 dB(A)	≤55 dB(A)
Power source	AC220V/110V,50-60Hz	AC220V/110V,50-60Hz	AC220V/110V,50-60Hz
Gas source	Air/Oxygen@0.3-0.4MPa	Air/Oxygen@0.3-0.4MPa	Air/Oxygen@0.3-0.4MPa
Alarm	When gas supply pressure difference >0.1 MPa		
Humidifier	Standard:PN-2000F; Optional:PN-2000FB,PN-2000FC850		
Air compressor	PN-4000(Optional)	Built-in	PN-3000(Optional)
Trolley	Yes	Optional	Yes



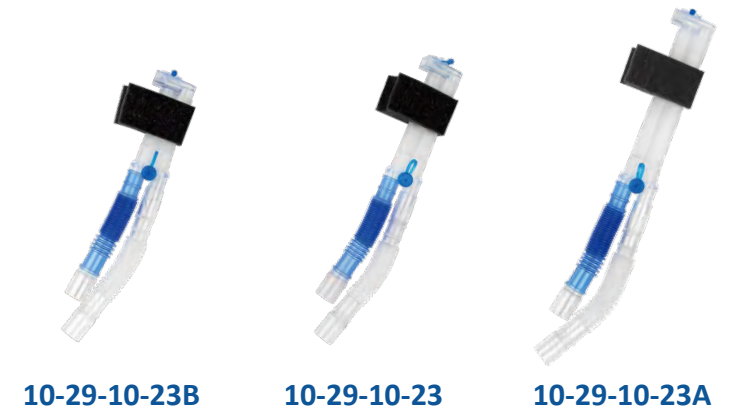
NCPAP Bubble generator

- Made of PC material .
- Reusable and unbreakable with overflow protection.
- Adjust the CPAP pressure by column from 3 to 10 cmH₂O.
- The overflow container,cover and fill funnel can be easily removed for cleaning and disinfection without disturbing CPAP.

Interface



Mode	Description
10-29-10-23B	Interface nasal tube,50mm
10-29-10-23	Interface nasal tube,70mm
10-29-10-23A	Interface nasal tube,100mm

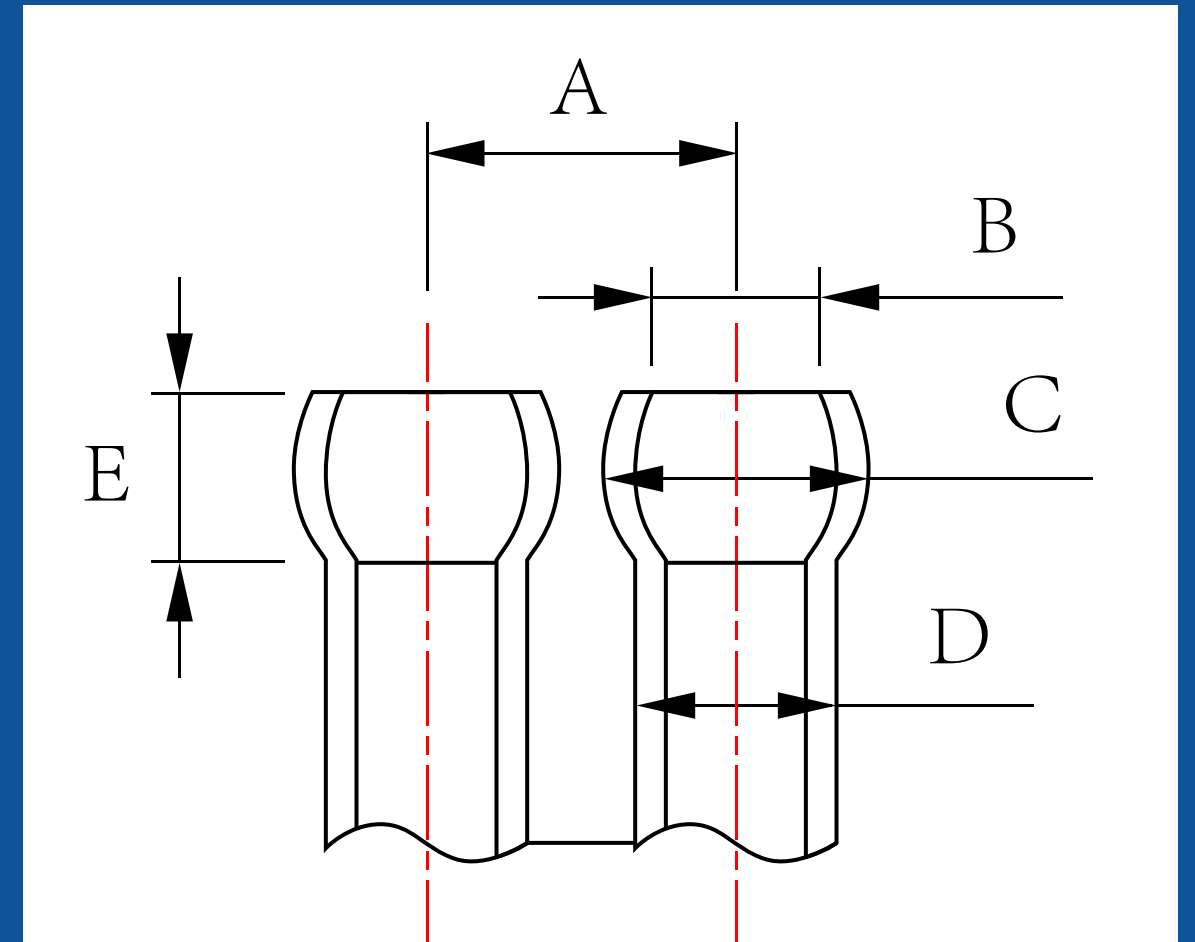
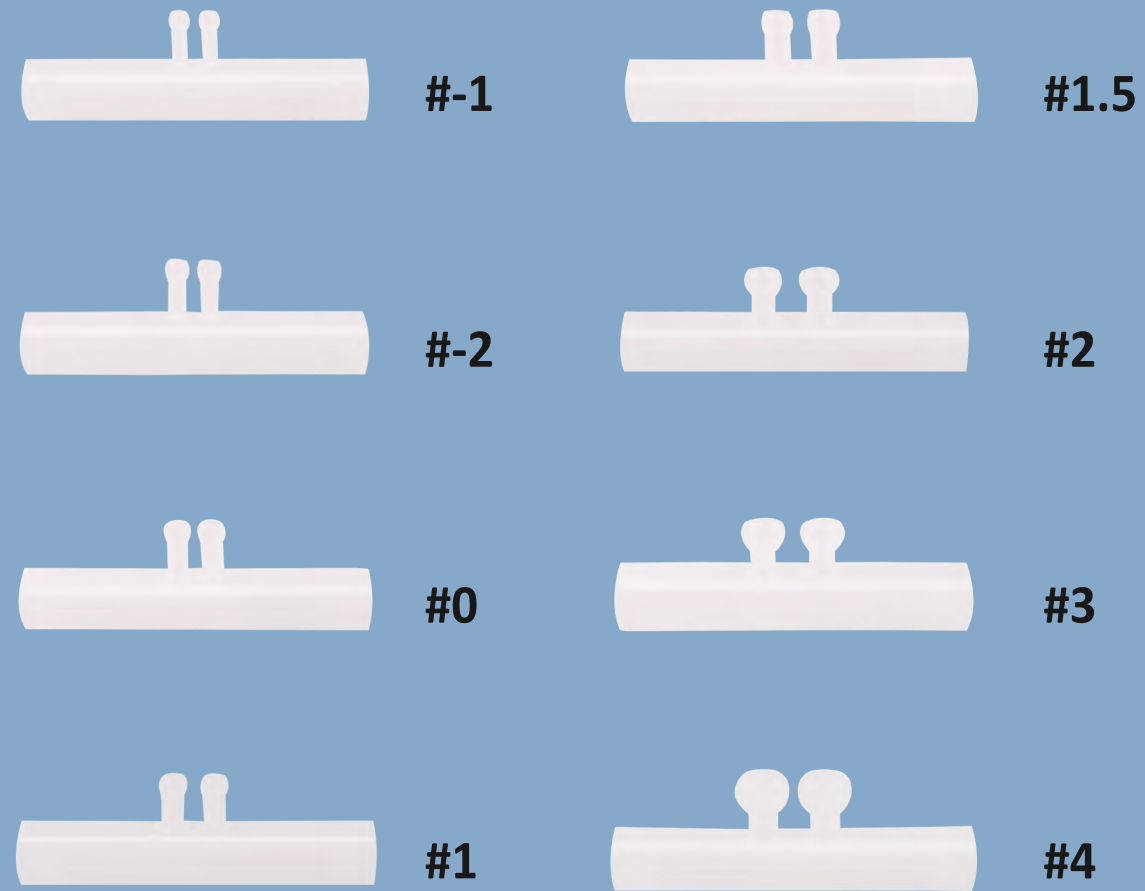


Mode	Description
08-01-03-64I	Infant Bonnet,29-36cm
08-01-03-64II	Infant Bonnet,36-46cm



Mode	Description
08-01-03-53	Nasal prong,3020
08-01-03-54	Nasal prong,3520
08-01-03-55	Nasal prong,4030
08-01-03-56	Nasal prong,4540
08-01-03-57	Nasal prong,5050





Horizontal nasal prong



Size	A	B	C	D	E
#-1	5mm	Ø 1.5mm	Ø 3.5mm	Ø 2.4mm	Ø 3mm
#-2	5.5mm	Ø 2.5mm	Ø 4mm	Ø 3mm	Ø 3mm
#0	5.5mm	Ø 3mm	Ø 4.5mm	Ø 3.5mm	Ø 3mm
#1	6mm	Ø 2.5mm	Ø 4.5mm	Ø 3.5mm	Ø 3mm
#1.5	7.5mm	Ø 3.5mm	Ø 5mm	Ø 4mm	Ø 3.5mm
#2	9mm	Ø 3mm	Ø 6mm	Ø 4mm	Ø 4.5mm
#3	9.5mm	Ø 3.5mm	Ø 6.7mm	Ø 4mm	Ø 5.5mm
#4	9.5mm	Ø 5.5mm	Ø 8mm	Ø 4.5mm	Ø 5.5mm

Air Oxygen Blender



AD3000-SPA



AD3000-SPB



AD3000-SPD



AD3000-SPD2



AD3000-SPE

Model	AD3000-SPA	AD3000-SPB	AD3000-SPD	AD3000-SPD2
FiO ₂	21%-100%	21%-100%	21%-100%	21%-100%
Flow	2-18LPM	1-15LPM	0.1-1&1-10LPM	0.1-1&1-10LPM
Pressure	Air/Oxygen@0.3-0.4MPa			
Alarm	When gas supply pressure difference >0.1 MPa			
Alarm noise	>57 dB(A)	>57 dB(A)	>57 dB(A)	>57 dB(A)
Number of output	Single	Single	Single	Dual
Accuracy of FiO ₂	±3%	±3%	±3%	±3%
Bleed flow	/	/	3LPM	3LPM

Model	AD3000-SPE
Power source	1.5V AAA battery x 3
FiO ₂	21%- 100 %
Flow	1-15 LPM
Pressure	Air/Oxygen @ 0.3- 0.4 MPa
Alarm	When gas supply difference > 0.1 MPa
Alarm noise	>57dB(A)
Accuracy of FiO ₂	±3%

Recommended Blender Accessories



10-29-02-01

Product code

10-29-02-01

Description

Air high pressure tube,
2m(6.5ft),black



10-29-02-03

Product code

10-29-02-03

Description

Oxygen high pressure tube,
2m(6.5ft),blue



10-29-14-12

Product code

10-29-14-12

Description

Bubble humidifier bottle



10-29-19-02

Product code

10-29-19-02

Description

Mounting bracket



10-29-10-05A

Product code

10-29-10-05A

Description

Central air connector,
Chinese standard
(BS,DIN,American
standard optional)



10-29-10-06A

Product code

10-29-10-06A

Description

Central oxygen connector,
Chinese standard
(BS,DIN,American
standard optional)



10-29-10-04I

Product code

10-29-10-04I

Description

A output connector II



10-29-10-04

Product code

10-29-10-04

Description

A output Connector III



Medical Air Compressor

Pigeon PN series provide air support for CPAP, ventilator, anaesthesia machine, etc.

- Oil-free, water-free, noise-free.
- Integrated with American GAST/THOMAS oil-free pump.
- Multiple well-known pneumatic components such as Japanese SMC & UK NORGREN.
- Double output is optional, providing air support for more than one machine.



PN-5000



PN-4000



PN-3000



PN-2000

Model	PN-5000	PN-4000	PN-3000	PN-2000
Output pressure	0.018MPa	0.25-0.4MPa	0.25-0.4MPa	0.25-0.4MPa
Continuous flow	10LPM	25LPM	60LPM	90LPM
Peak flow	>30LPM	>60LPM	>120LPM	>180LPM
Noise	≤55 dB(A)	≤55 dB(A)	≤55 dB(A)	≤55 dB(A)
Power source	AC 220V/110V, 50-60Hz	AC 220V/110V, 50-60Hz	AC 220V/110V, 50-60Hz	AC 220V/110V, 50-60Hz
Power	30VA	250VA	500VA	750VA
Thermal protection	/	120°C	120°C	120°C
Pressure display	/	Pressure gauge	Pressure gauge	Pressure gauge

Infant Resuscitator

With safe, precise and controllable PIP and PEEP, Pigeon infant resuscitator is easy to operate, and can provide temporary breathing support.



AD3000-TPA



AD3000-TPB

Model	AD3000-TPA	AD3000-TPB
Flow	/	0-15LPM
FiO ₂	/	21%-100%
Alarm activation	/	Gas pressure difference > 0.1MPa
Pressure gauge	-2-10kPa(-20-100cmH ₂ O)	
PIP	@5 LPM, 2 ~ 27 cmH ₂ O	
	@8 LPM, 4 ~ 36 cmH ₂ O	
	@10 LPM, 6 ~ 42 cmH ₂ O	
	@15 LPM, 12 ~ 57 cmH ₂ O	
CPAP/PEEP	@5 LPM, 0.3 ~ 6 cmH ₂ O	
	@8 LPM, 0.8 ~ 14 cmH ₂ O	
	@10 LPM, 1 ~ 17 cmH ₂ O	
	@15 LPM, 2.5 ~ 23 cmH ₂ O	
Noise	≤ 50 dB(A)	
Gas source	0.3MPa-0.4MPa	
Recommended patient weight	Up to 10KG	

Accessories



08-01-03-14

Product code	08-01-03-14
Description	T-piece breathing circuit, disposable, 1.2m (*Reusable T-piece breathing circuit optional)



08-01-03-98

Product code	08-01-03-98
Description	Gas intake tube, 2.5m



06-04-04-06A

Product code	06-04-04-06A
Description	Text lung, 25 ml



10-29-27-02

Product code	10-29-27-02
Description	Resuscitation masks Included 5 sizes XS(35 mm), 1 pc S(42 mm), 1 pc M(50 mm), 1 pc L(60 mm), 1 pc XL(72mm), 1 pc

Humidifier



PN-2000F/FA



PN-2000FB



PN-2000FC850

Model	PN-2000F/FA	PN-2000FB	PN-2000FC850
Power source	AC 220V/110V,50-60Hz		
Heater Plate	150W		
Thermal cut off	95±6 °C		
Display	Three digit,0.56 inch,7 segment LED		
Temperature monitoring	0-75 °C		
Max-temperature of heated plate	85 °C		
Heater Wire	/	22V~,2.73A, 60W, 50/60Hz	22V~,2.73A, 60W, 50/60Hz
Power Rate	150W	220W	220W
Alarm	No	Yes	Yes
Temperature Control Settings	/	Heated wire mode: P1:25-29 °C P2:29-35 °C P3:35-39 °C	Invasive Mode: Chamber outlet: 35.5-37 °C, Airway 35-40 °C
		Non-heated wire mode: P1:23-27 °C P2:27-32 °C P3:32-37 °C	Noninvasive Mode: Chamber outlet: 31 °C, Airway 28-34 °C
Range	10-70 °C, Accuracy: ±2 °C (In 25-45 °C temperature range)		

Accessories

Humidification chambers



PN-2000F



PN-2000FA

Model	PN-2000F
Description	Reusable chamber,adult,PC material

Model	PN-2000FA
Description	Reusable chamber,infant,PC material



VHC20



VHC10

Model	VHC20
Description	Disposable chamber,auto-fill,adult

Model	VHC10
Description	Disposable chamber,auto-fill,infant

Accessories

Temperature probe



For humidifier PN-2000FB



For humidifier PN-2000FC850

Heated wire adaptor



For humidifier PN-2000FB



For humidifier PN-2000FC850



For humidifier PN-2000FC850

Humidification paper



Reusable heated wire assembly



Mounting bracket

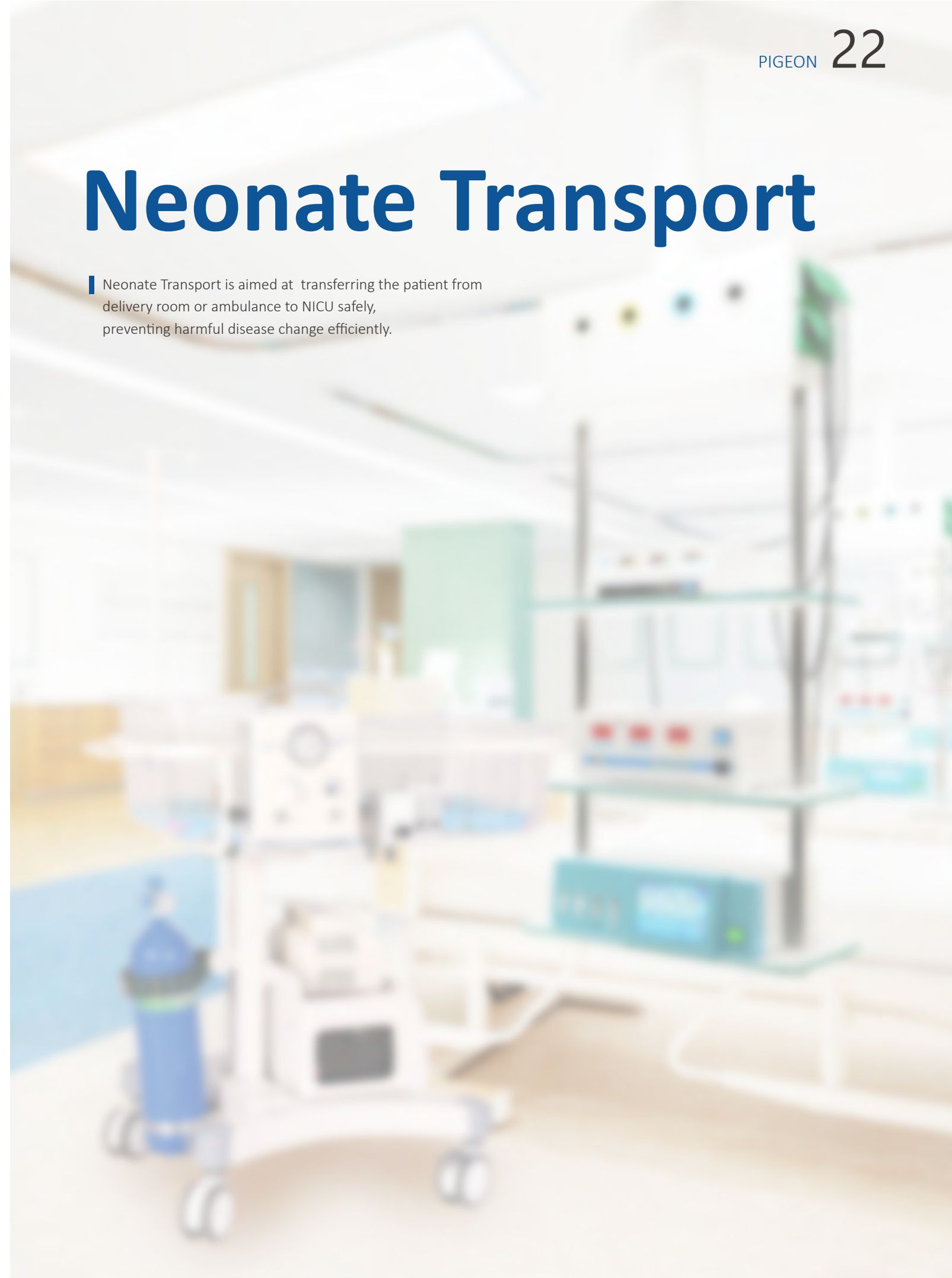


Draw wire



Neonate Transport

Neonate Transport is aimed at transferring the patient from delivery room or ambulance to NICU safely, preventing harmful disease change efficiently.





TP00003



TP00004



TP00009

Suction



PN-3000VSD30



PN-3000XP30



PN-3000XP70

Model	TP00003	TP00004	TP00009
Respiratory mode	Infant resuscitator	Infant resuscitator	Bubble CPAP
Air oxygen blender	External	Built-in	Built-in
Flow	0.1-1&1-10LPM	0-15LPM	0-10LPM
FiO ₂	21%-100%	21%-100%	21%-100%
Pressure limit(MAX-P)	20-60cmH ₂ O,@5-15cmH ₂ O		3-10cmH ₂ O
Peak inspiratory pressure(PIP)	2-57cmH ₂ O,@5-15LPM		/
Positive end-expiratory pressure (PEEP)	0.3-23cmH ₂ O,@5-15LPM		3-10cmH ₂ O
Noise	<55 dB(A)		
Gas input	Air/Oxygen,0.3-0.4MPa		
UPS capacity	1500W		
Cylinder Capacity	4L		
Power source	AC 145-290V±5V		
Load capacity	Up to 20KG		

Model	PN-3000VSD30	PN-3000XP30	PN-3000XP70
Mode	Continuity/Intermittence	Continuity	Continuity
Suction pump	Piston	Piston	Piston
The maximum negative pressure value	≤0.06MPa	≥0.09MPa	≥0.09MPa
Negative pressure	-0.02MPa-0.06MPa	-0.02MPa-0.09MPa	-0.02MPa-0.09MPa
Pumping rate	≤20L/min	≥20L/min	>30L/min
Time adjustment	Working time adjustment range: 01~10min	/	/
	Interval time adjustment range: 01~10min		
	Default time: 5min (ON)/2min(OFF)		
Container	1200ml	1200ml	3500mlX2
Noise	≤55dB(A)	≤55dB(A)	≤55dB(A)
Power source	AC 220V/110V, 50-60Hz	AC 220V/110V, 50-60Hz	AC 220V/110V, 50-60Hz
Input power	100VA	75VA	230VA

Oxygen Analyser

Characteristics:

- Convenient to use with small size
- The battery is chargeable(3.7V) that is convenient to carry
- Stable performance and high precision
- Economical and practical

Technical parameters:

- Oxygen concentration:21%-100%
- Power:DC 3.7V
- Use life of oxygen sensor:2 years
- Low battery alarm



Base Unit Specifications

Measurement Range	0.0-100%
Resolution	0.1%
Accuracy and Linearity	±1% of full scale at constant temperature, R.H.and pressure when calibrated at full scale Total
Accuracy	±3% Actual oxygen level over full operating temperature range
Response Time	90% of final value in approximately 15 seconds at 23°C
Operating Temperature	15°C-40°C (59°F- 104°F)
Atmospheric Pressure	800-1013 mBars
Humidity	0-95%(non-condensing)
Power Requirements	3,AAA Alkaline batteries(3x 1.5 Volts)
Battery Life	approximately 5000 hours in typical use
Low Battery Indication	"LOW BAT"icon displayed on LCD
Sensor Type	ENVITEC 00M102-1 galvanic fuel cell
Expected Sensor Life	>1,000,000% O2 Hours over 2 years in typical applications Alarm
System	high/low alarms, audio buzzer
Low Oxygen Alarm Range	0%-99% (> 1% lower than low alarm)
High Oxygen Alarm Range	1%-100% (>1% higher than low alarm)
Alarm Accuracy	exact to displayed alarm value
Dimensions	84mmx 130mm x 31mm
Weight	approximately 0.25 kg

Adult HFNC

Pigeon High Flow Nasal Cannula(HFNC) oxygen therapy is a form of non-invasive respiratory support which comprises an air oxygen blender, an active humidifier ,a single heated circuit and a nasal cannula.It delivers adequately heated and humidified medical gas up to 60 L/min,and is considered to have a number of physiological effects.

Air Oxygen Blender	
Model	AD3000-SPA (6-60LPM)
FiO2	21%-100%
Pressure of source	Air/Oxygen@0.3-0.4 Mpa
Alarm	When gas supply pressure difference > 0.1 Mpa
Alarm Noise	>57 dB(A)
Number of output	Single
Number of flowmeter	Single
Accuracy of FiO2	3%
Bleed Flow	3LPM



High Flow Nasal Cannula

Code	Description
HFNC-001	High flow nasal cannula ,Large
HFNC-002	High flow nasal cannula,Medium
HFNC-003	High flow nasal cannula , Small

Infant HFNC



High flow nasal cannula

Code	Description
I-HFNC-001	High flow nasal cannula ,Large
I-HFNC-002	High flow nasal cannula,Medium
I-HFNC-003	High flow nasal cannula , Small



HFNC without air compressor

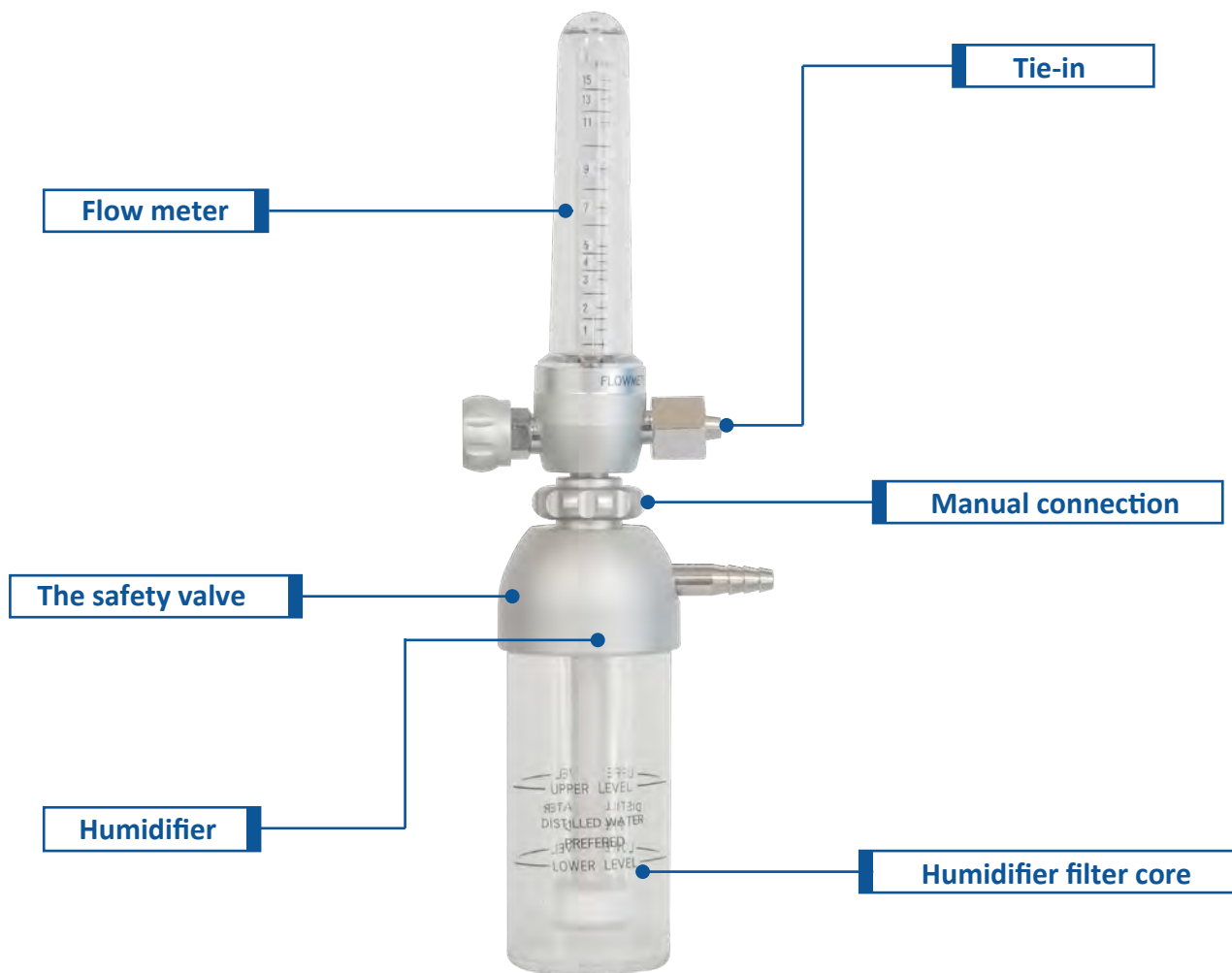


HFNC with air compressor



Oxygen Inhaler

Circuit Support Arm



Performance parameters

- Pressure resistance: before the flow control valve should be able to bear the pressure of 10 bar.
- Humidification bottle should not be broken under pressure $0.5\text{MPa} \pm 0.05\text{MPa}$.
- Flow control range: $1\text{L}/\text{min} \sim 15\text{L}/\text{min}$
- Pressure of relief valve: $0.35\text{MPa} \pm 0.35\text{MPa}$, the relief valve will exhaust automatically.
- Tighten the flow valve and sealed the parts connection of inhaler. Shall not be lock.
- Humidification bottle: GZ-XRQ-1 45~85ml.

Type	Hanging weight	Material	Surface treatment	Arm length	Tube diameter
Light	0.5 kg	Aluminum, stainless steel	Oxidation, electroplating	390mm x 380mm x 380mm x 95mm	Φ14
Heavy	1.5 kg	Aluminum, stainless steel	Oxidation, electroplating	400mm x 420mm x 420mm x 120mm	Φ16

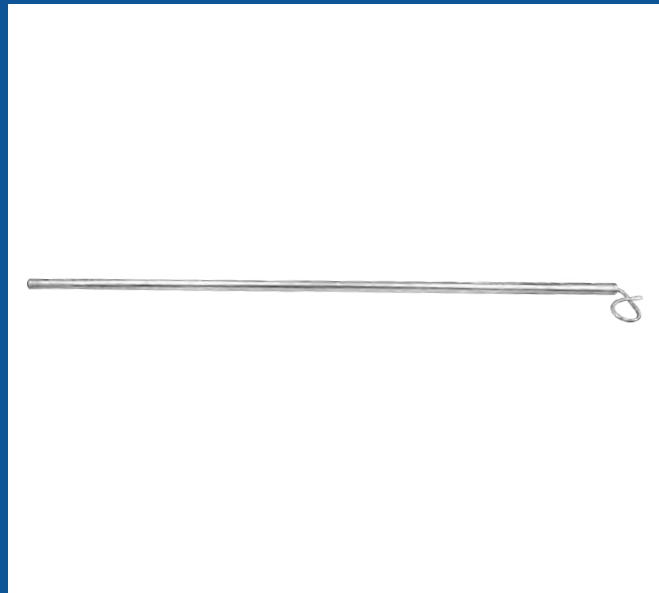
Trolley

Completed Matching Solution of Ventilator

- Fabian
- MV
- AVEA
- VELA
- RESMED
- SLE
- Newport
- GE



Parts



IV pole



Mounting bracket



Disposable breathing circuit



Reusable silicone tube



Water trap



Y connector



Adapter